

# Caprice No. 5

(adapted for trumpet)

N. Paganini

Musical notation for measures 1 through 6. The first measure begins with a half rest followed by a half note G4. The piece features a series of sixteenth-note runs with various accidentals and slurs. Measure 6 ends with a double bar line and a fermata over the final note.

7 **Agitato**

Musical notation for measures 7 and 8. The tempo is marked **Agitato**. The music consists of a continuous sixteenth-note pattern in 4/4 time.

*mf* *staccato*

9

Musical notation for measures 9 and 10. The sixteenth-note pattern continues with some chromatic alterations.

11

Musical notation for measures 11 and 12. The sixteenth-note pattern continues.

14

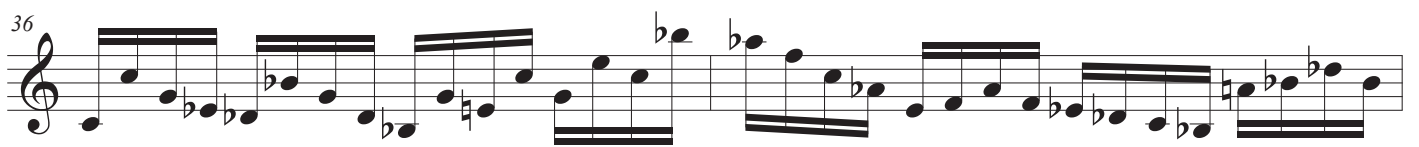
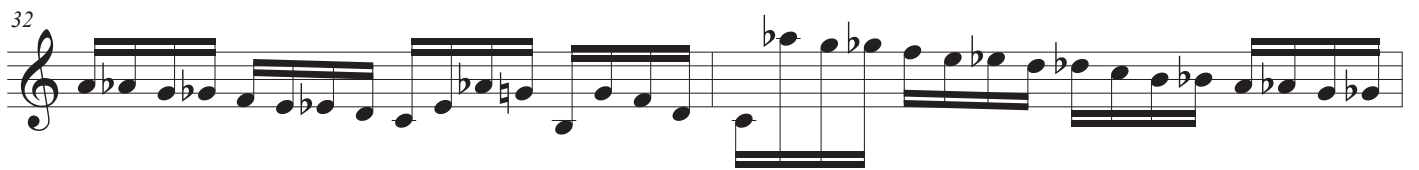
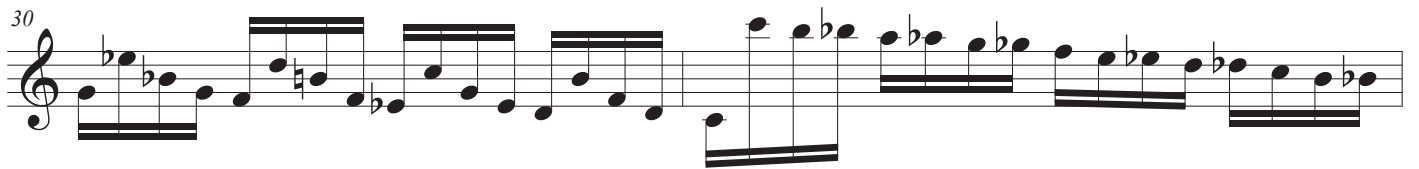
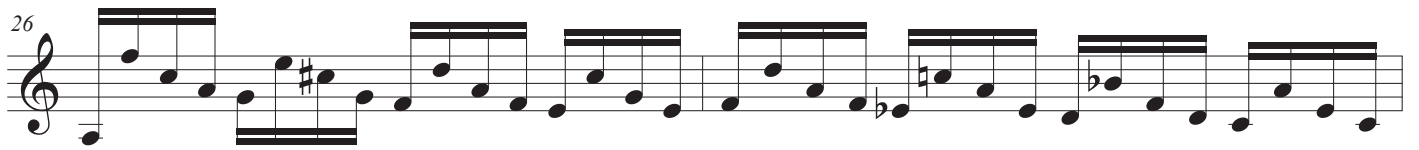
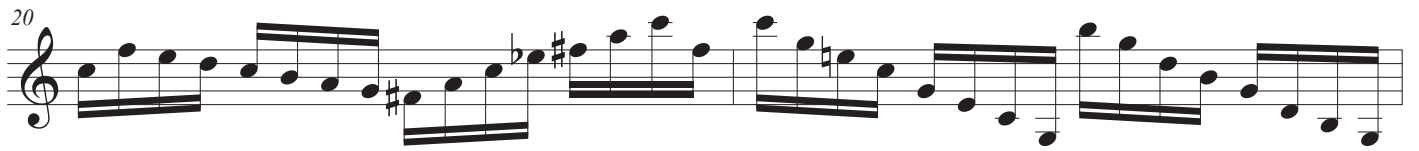
Musical notation for measures 14 and 15. The sixteenth-note pattern continues.

16

Musical notation for measures 16 and 17. The sixteenth-note pattern continues.

18

Musical notation for measures 18 and 19. The sixteenth-note pattern continues.



40



42



44



46



48



50



52



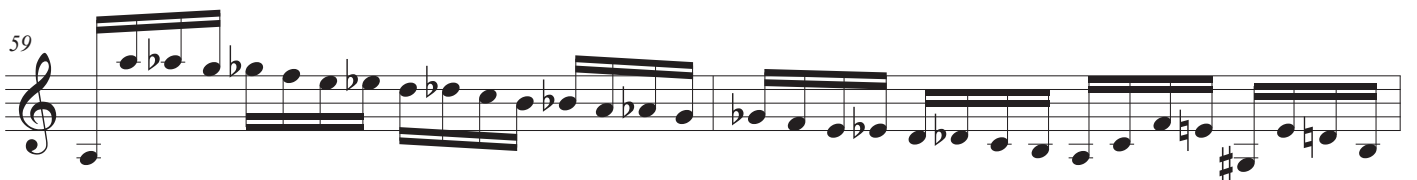
54



57



59



61

63

65

67

The image shows a musical score for Caprice No. 5, measures 61 through 67. The score is written in treble clef with a key signature of three sharps (F#, C#, G#). Measure 61 features a series of eighth-note chords. Measure 63 begins with a half note followed by a melodic line with slurs and accents. Measure 65 continues the melodic development with slurs and accents. Measure 67 contains a complex melodic line with many accidentals and a final cadence.